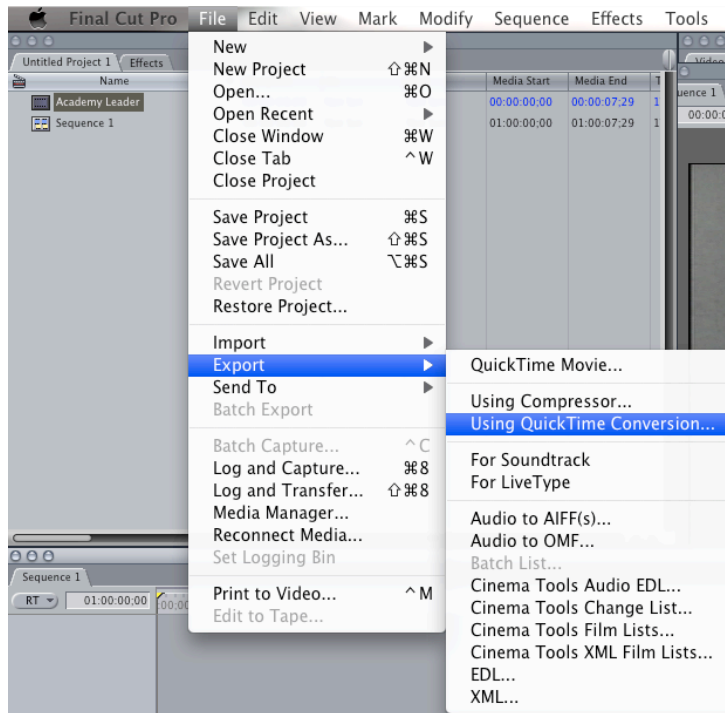


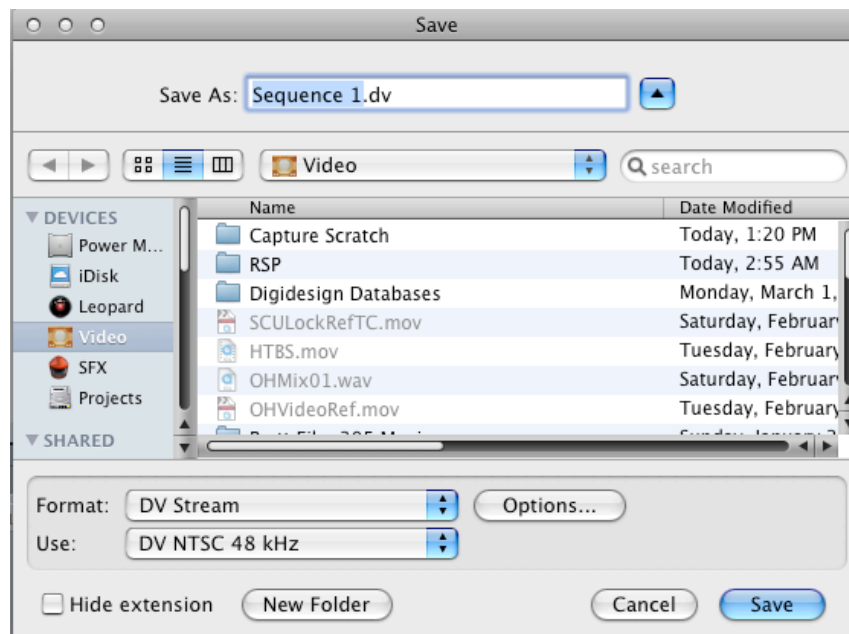
QT movie export from Final Cut Pro

Quicktime Movie (large file - approx 228 MB per minute):

Export Menu > select: Using Quicktime Conversion



Format: DV Stream

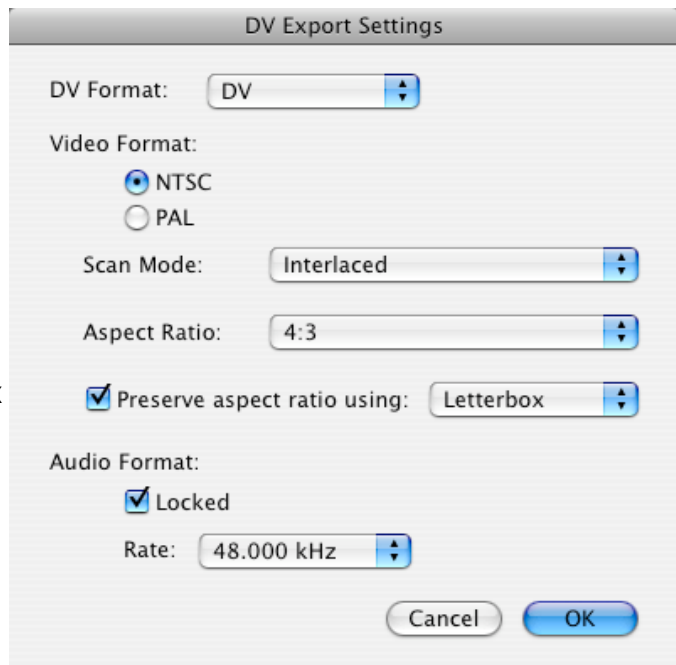


resoundPOST

275 Vanderbilt Avenue • Brooklyn, NY 11205 • 718.288.4837

Options...

Video Format: NTSC
(or PAL if you must)
Scan Mode: Interlaced
Aspect Ratio: 4:3
✓ Preserve aspect ratio using Letterbox
Audio Format:
✓ Locked Rate: 48.000 kHz



Please include the following:

visual time code (a time code window burned into the quicktime movie) that matches your timeline's timecode.

a 2 pop (1 frame long audio tone 1khz at -20dbfs) at 00:59:58:00 two seconds before the first frame of action with a corresponding video frame (usually the number 2 for 1 frame)

for multi reel projects each reel should begin at the respective hour
i.e. Reel 1 at 01:00:00:00 Reel 2 at 02:00:00:00, etc...

If you have additional questions please call.